



## CHARACTERISTICS

### Active Ingredient

- $1 \times 10^8$  *Bradyrhizobium elkanii* CFU/g
- $5 \times 10^7$  *Bacillus velezensis* CFU/g

### Bulk Density

31.5 lbs per cu. ft., 0.505 kg/L

### In-Furrow Application Rate

0.81 oz per 1,000 feet of row. With 10-inch row spacing, apply 2.7 pounds per acre with one bag treating 10 acres

### Package Sizes

- 27 lbs (12.2 kg) per bag
- 432 lbs (196 kg) per tote

Always read and follow label instructions

## MULTI-STRAIN PREMIUM SOYBEAN GRANULAR INOCULANT

With its high porosity structure maintaining the growth environment to protect and preserve the two unique strains of rhizobia, **LALFIX® START SPHERICAL Soybean** offers unmatched **performance, durability** and **ease-of-use**.

Our proprietary, dual-action phosphorus solubilizer, *Bacillus velezensis*, contained within each granule, quickly colonizes the root system allowing for newly available phosphorus to be efficiently taken up by the plant. In fact, the biological contained within **LALFIX® START SPHERICAL Soybean** is the benchmark for increased phosphorus availability at all soil pH levels.

Once applied to the soil, the highly efficient bacteria will colonize the root promoting early nodulation and N fixation for better crop establishment and enhanced yields.



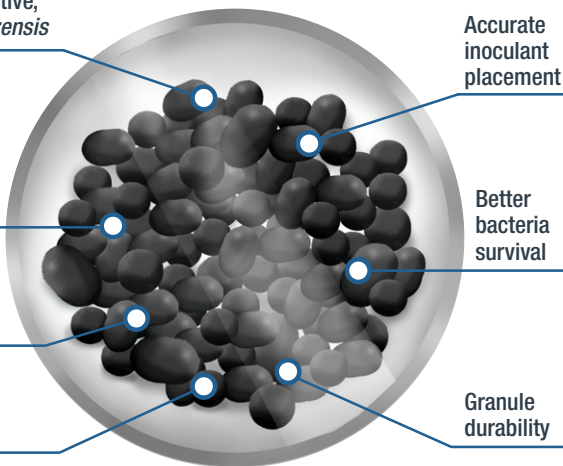
## ADVANTAGES

New for 2021  
Addition of active,  
*Bacillus velezensis*

Better flowability  
through  
application  
equipment

Consistent  
granule size

Zero dust



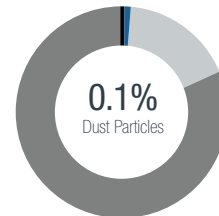
Accurate  
inoculant  
placement

Better  
bacteria  
survival

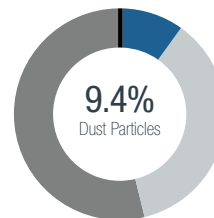
Granule  
durability

## Spherical Granule: Consistent Size & Low Dust

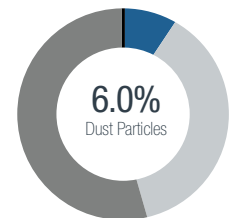
Agvise Laboratories, Northwood, ND - 2019



LALFIX® START  
SPHERICAL SOYBEAN



Bayer, BASF, Other granulars



Verdesian Granular

● <0.5 mm   ● 0.5-1.0 mm   ● 1.0-2.0 mm   ● >2.0 mm



### MODES OF ACTION

#### *Bacillus velezensis*

Phosphorus Solubilization

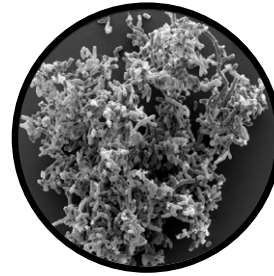
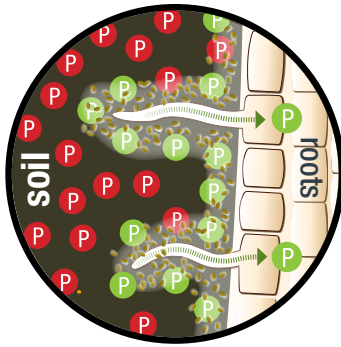
PHYTASE ACTION  
ON ORGANIC  
PHOSPHORUS



ORGANIC ACIDS  
ACTION ON MINERAL  
PHOSPHORUS



INCREASED PHOSPHORUS  
AVAILABLE IN THE  
RHIZOSPHERE



### APPLICATION TIPS

- Follow equipment manufacturer's calibration methods.
- Calibrate in field at time of product use.
- Environmental conditions may affect calibration set points and overall granular flowability. Check calibration regularly.
- Ensure hopper tank, metering system and delivery hoses are clean from moisture, fertilizer, and pesticide residue before calibration.
- Granules should be applied directly into the seed trench furrow with the seed.
- Application rates greater than recommended are not detrimental and increased application rates may be beneficial.

Reference chart below for specific row width and suggested application rates:

ROW WIDTH		RECOMMENDED RATE			AREA TREATED - ACRES	
in	cm	lbs/ac	kg/ac	kg/ha	BAG	TOTE
6	15	4.4	2	5	6.1	98
7	18	3.8	1.7	4.3	7.1	113.5
8	20	3.3	1.5	3.7	8.2	131
9	23	3.0	1.4	3.3	9.0	144
10	25	2.7	1.2	3.0	10.0	160
12	30	2.2	1.0	2.5	12.3	196.5
15	38	1.8	0.8	2.0	15.0	240
22	56	1.2	0.5	1.4	22.5	360
30	76	0.9	0.4	1.0	30.0	480

### COMPATIBILITY

LALFIX® START SPHERICAL Soybean is compatible with seed-applied treatments and other in-furrow applications. If you have a compatibility question, contact your Lallemand Plant Care representative for more information.

### About Lallemand Plant Care

Since the beginning of the 20th Century, LALLEMAND has been an expert in yeast and bacteria manufacturing. The family-owned company is now a global leader in the development, production, and marketing of microorganisms for various agri-food industries. Using sound science and know-how, LALLEMAND PLANT CARE (LPC) works closely with clients to deliver the right technology, in the right formulation, for the right application. LPC is committed to solving grower challenges, significantly improving yield and crop vitality.



Microbial By Nature

[www.lallemandplantcare.com](http://www.lallemandplantcare.com)



LALLEMAND PLANT CARE