



WETTABLE
GRANULE



BIOFUNGICIDE



CHARACTERISTICS

EPA REGISTERED

Active Ingredient
Gliocladium catenulatum
strain J1446

Guarantee
> 1.0 x 10⁹ CFU/g

4-hour REI; 0-day PHI

Package Sizes
2 lbs / 3.5 oz

Storage information
Store sealed in original
container in a cool,
dry place.

Always read and follow label instructions

DEPENDABLE PATHOGEN CONTROL COMBATS FOLIAR AND ROOT PATHOGENS

Protect your plants from destructive diseases. LALSTOP G46 WG controls a variety of both foliar and soilborne diseases in fruit, vegetable, herb, and ornamental crops. LALSTOP G46 WG is effective in vigorously controlling or suppressing **foliar pathogens** such as:

✓ *Botrytis cinerea* ✓ Powdery Mildews ✓ *Didymella bryoniae*

and soilborne pathogenic species of:

✓ *Pythium* ✓ *Rhizoctonia* ✓ *Verticillium*

ADVANTAGES

- Based on a **naturally occurring fungus** that is safe to growers, consumers, beneficial insects, and the surrounding environment.
- Controls a vast number of common plant diseases including grey mold, powdery mildew, gummy stem blight, damping-off, root and crown rots, and others.
- Serves as a **protective barrier against pathogens**, enabling robust plant growth that naturally leads to reduced susceptibility to diseases.
- **Compatible** with most IPM programs.
- **No known risks for resistance** due to multiple modes of action.

TIP

For even better management of foliar diseases with LALSTOP G46 WG, combine with LALSTIM OSMO to reduce stress effects that make plants more susceptible to infection.



RECOMMENDED CROPS



Greenhouse, Field-grown
Fruit & Vegetables



Cannabis*



Ornamentals

MODES OF ACTION

Several modes of action are in play for unmatched plant protection. LALSTOP G46 WG:

- Creates protective zones around plants (Antagonistic Metabolites).
- Outcompetes pathogenic organisms for space and nutrients on plant surfaces and around roots (Competition).
- It also attacks and feeds on key pathogens to reduce their potential to infect plants and cause disease (Predation and Hyperparasitism).

*Only in states where legally permitted.



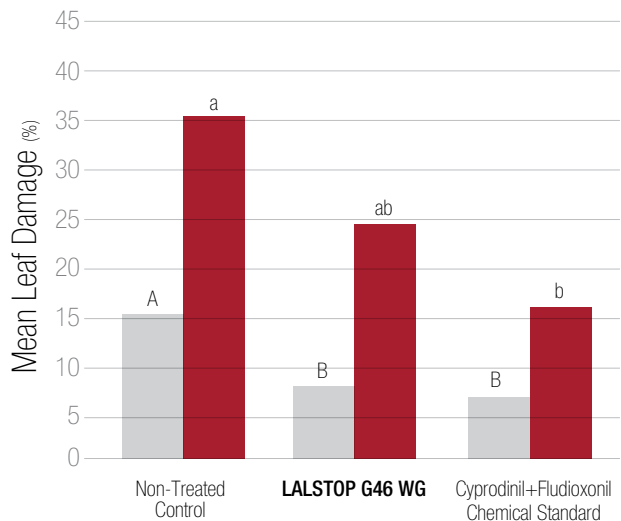
WETTABLE
GRANULE



BIOFUNGICIDE

TRIAL RESULTS

Botrytis Grey Mold Reduction on Greenhouse Tomato



SICOP, Spain, 2018

Tomato Variety: 'Volley' - Greenhouse

Naturally high *Botrytis cinerea* pressure

4 Applications per Treatment

CONCLUSION:

LALSTOP G46 WG provides Botrytis control similar to the chemical standard, giving growers another effective tool for their disease management programs.

ASSESSMENT DATE

32 DAYS (3 APPLICATIONS MADE)

47 DAYS (4 APPLICATIONS MADE)

Treatments with the same letter on the same assessment date are not significantly different (P < 0.05)

APPLICATION RATES

APPLICATION METHOD	LALSTOP G46 WG APPLICATION RATES
Foliar Spray	0.3 - 11 oz per acre
Cold Fogging / ULV Spray	2 - 3 oz per gal water
Seed Soak and Transplant or Cutting Dip	1 oz per 10 gal water
Growing Media or Soil Drench / Spray	0.4-10 oz per 1000 ft ²
Greenhouse Drip Irrigation / Chemigation	0.4-0.7 oz per 1000 ft ²
Field Drip Irrigation / Chemigation	7 - 14 oz per acre
Growing Media / Soil Incorporation	0.33 oz per yd ³
Banded, In-furrow or Side Dress Application	7 - 14 oz per acre

Use lower rates for lower disease pressures and/or low plant densities, and higher rates for higher disease pressures and/or higher plant densities. Consult with your distributor or Lallemand Plant Care representative for rate, timing and other application recommendations specific to your operation.

About Lallemand Plant Care

Since the beginning of the 20th Century, LALLEMAND has been an expert in yeast and bacteria manufacturing. The family-owned company is now a global leader in the development, production, and marketing of microorganisms for various agri-food industries. Using sound science and know-how, LALLEMAND PLANT CARE (LPC) works closely with clients to deliver the right technology, in the right formulation, for the right application. LPC is committed to solving grower challenges, significantly improving yield and crop vitality.

Proud Contributor to COVAX-Unicef, #sharethehealth.

The pandemic doesn't end for anyone, until it ends for everyone.
<https://www.lallemandplantcare.com/en/usa/whats-new/we-support-the-covax-unicef-covid-19-vaccination-campaign/>



Microbial By Nature

www.lallemandplantcare.com

XF-USA 0621



LALLEMAND PLANT CARE