



SOYBEAN



PEA & LENTIL



CHICKPEA

## LALFIX® START Spherical Granular New Product

### Introducing The Future of Granular Inoculants

#### How it works

With its honeycomb structure maintaining the growth environment to protect and preserve the two unique strains of rhizobia, LALFIX® START offers unmatched performance, durability and ease-of-use. A new addition for 2021, our proprietary, dual-action phosphorus solubilizer, *Bacillus velezensis*, contained within each granule, quickly colonizes the root system which allows for the newly available phosphorus to be efficiently taken up by the plant. In fact, the biological contained within LALFIX® START is the benchmark for increased phosphorus availability at all soil pH levels.

Once applied to the soil, the highly-efficient bacteria will colonize the root promoting early nodulation and N fixation for better crop establishment and enhanced yields.

#### FEATURES

Active Ingredients:  
Dual strain rhizobia  
*Bacillus velezensis*

Application Rate:  
27 lb bag treats 10 acres at  
10 inch row spacing  
432 lb tote treats 160 acres  
at 10 inch row spacing

Package Size:  
27 lb bag  
432 lb tote

*Always read and follow label  
instructions*

## Modes of Action

### ***Bacillus velezensis***

*Bacillus velezensis* Solubilizes Phosphorus in 2 Ways

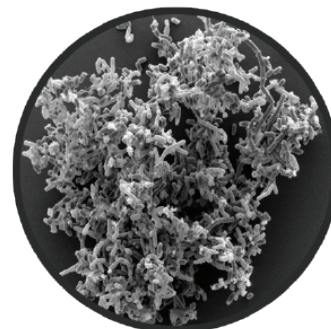
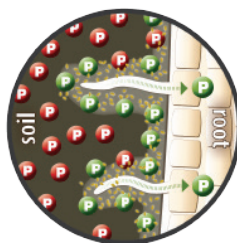
Phytase action  
on Organic  
Phosphorus



Organic  
Acids action  
on Mineral  
Phosphorus



Increases  
Phosphorus  
available in the  
Rhizosphere

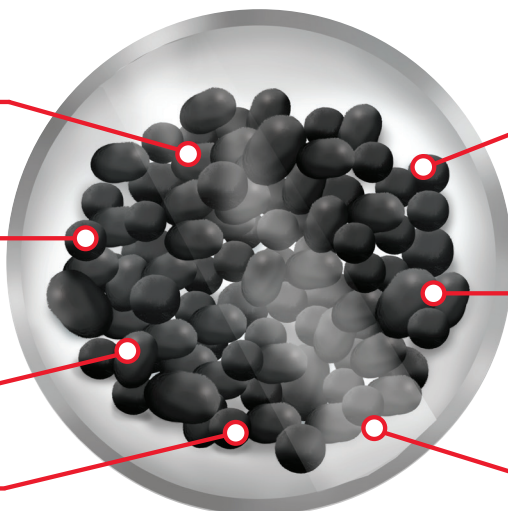


**New for 2021** - Addition  
of active, *Bacillus velezensis*

Better flowability through  
application equipment

Consistent granule size

Zero dust



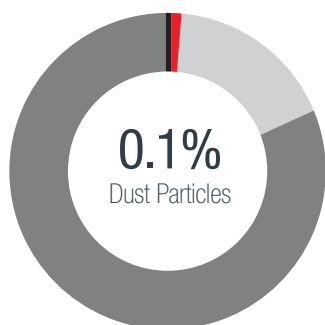
Accurate inoculant placement

Better bacteria survival

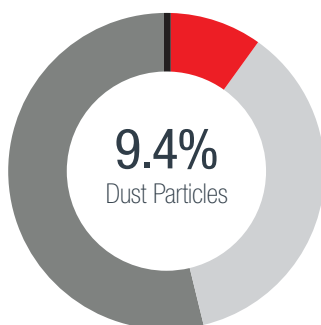
Granule durability

# Spherical Granule: Consistent Size & Low Dust

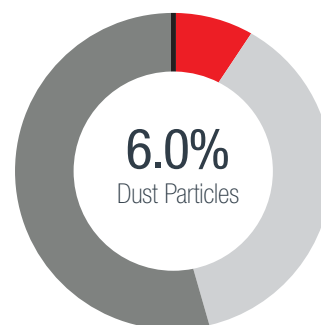
Agvise Laboratories, Northwood, ND – 2019



**LALFIX START**



Bayer, BASF, Other granulars



Verdesian Granular

● <0.5 mm    ● 0.5-1.0 mm    ● 1.0-2.0 mm    ● >2.0 mm

## Spherical Granular Trial Data

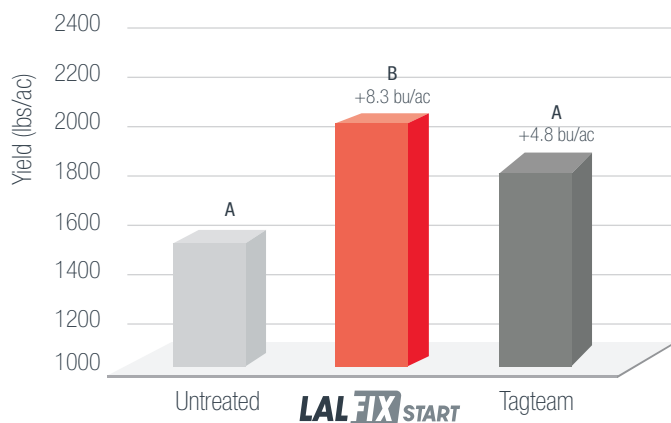
### LALFIX® START Granule 2020 Pea Trials

Conducted through Montana  
State University

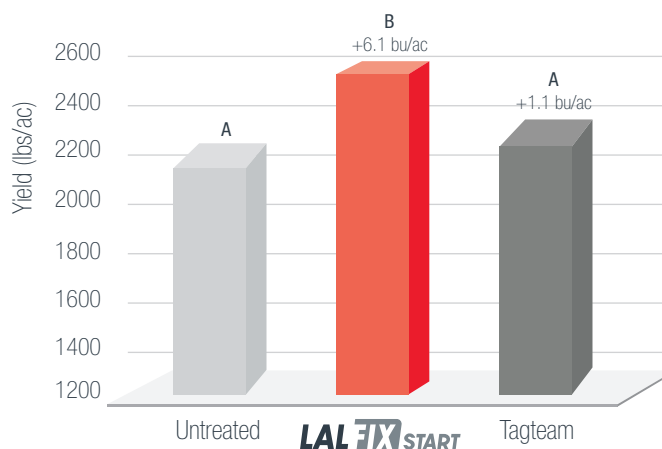
Conducted by Dr. Chengci Chen (Sidney)  
and Dr. Jed Eberly (Moccasin)

Bushel advantage over untreated  
listed above bars

Sidney, MT



Moccasin, MT



4x Replications. Treatments with the same letters are not significantly different at  $p < 0.1$ . soil pH = 7.3 (Sidney), 7.6 (Moccasin)

### About Lallemand Plant Care

Lallemand Plant Care (LPC) specializes in employing microorganisms including, but not limited to, yeast, bacteria, fungi and plant derivatives for biocontrol (i.e., controlling of harmful insects or microorganisms), biostimulation (i.e., eliciting natural responses) and biofertilization (i.e., enhancing plant nutrition).

Using a "field-led, science-supported" approach, LPC works closely with clients to deliver the right products for the right applications that benefit crops and create better customer experiences.