



PEA, LENTIL,  
& FABA BEAN



SPHERICAL  
GRANULAR



INOCULANT



### CHARACTERISTICS

#### Active Ingredient

$1 \times 10^9$  *Rhizobium leguminosarum* biovar *viciae* CFU/g  
 $5 \times 10^7$  *Bacillus velezensis* CFU/g

#### Bulk Density

31.5 lbs per cu. ft., 0.505 kg/L

#### Package Size

12.2 kg (27 lbs) per bag  
 391.9 kg (864 lbs) per tote

#### In-Furrow Application Rate

10-inch row spacing, apply  
 2.7 pounds per acre with  
 one bag treating 10 acres

Always read and follow label instructions

## MULTI-ACTION PREMIUM PEA & LENTIL GRANULAR INOCULANT

With its high-porosity structure maintaining the growth environment to protect and preserve the two unique strains of rhizobia, **LALFIX® START SPHERICAL Pea & Lentil** offers unmatched **performance, durability** and **ease-of-use**.

Our proprietary, dual-action phosphorus solubilizer, *Bacillus velezensis*, contained within each granule, quickly colonizes the root system allowing for newly available phosphorus to be efficiently taken up by the plant. In fact, the biological contained within **LALFIX® START SPHERICAL Pea & Lentil** is the benchmark for increased phosphorus availability at all soil pH levels.

Once applied to the soil, the highly efficient bacteria will colonize the root promoting early nodulation and N fixation for better crop establishment and enhanced yields.



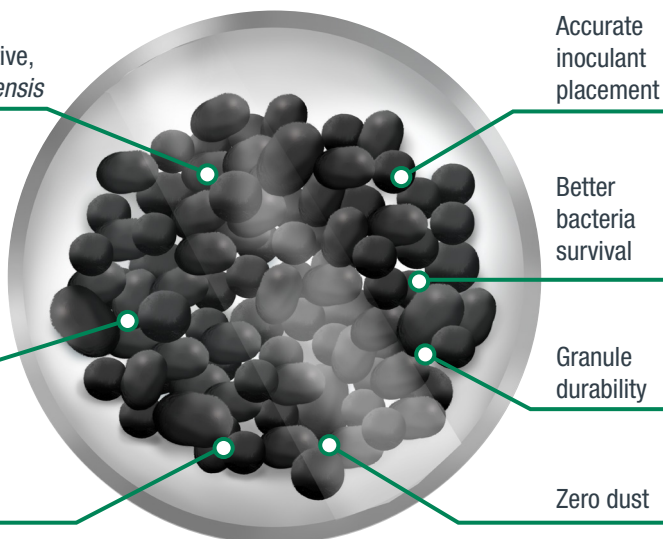
### ADVANTAGES

#### New for 2023

Addition of active, *Bacillus velezensis*

Better flowability through application equipment

Consistent granule size



Accurate inoculant placement

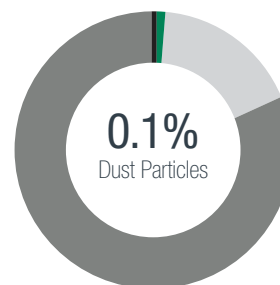
Better bacteria survival

Granule durability

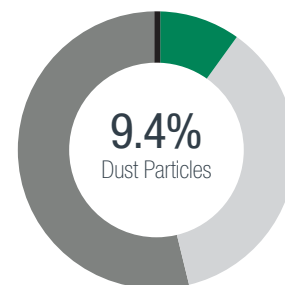
Zero dust

### SPHERICAL GRANULE: CONSISTENT SIZE & LOW DUST

AGVISE LABORATORIES



LALFIX® Granular Technology



Traditional Peat Granules

● <0.5 mm    ● 0.5-1.0 mm    ● 1.0-2.0 mm    ● >2.0 mm

Microbial By Nature

[www.lallemandplantcare.com](http://www.lallemandplantcare.com)



LALLEMAND PLANT CARE



PEA, LENTIL,  
& FABIA BEAN



SPHERICAL  
GRANULAR

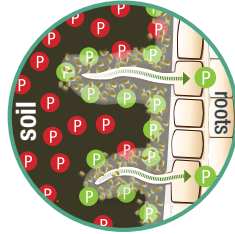


INOCULANT

### MODES OF ACTION

*Bacillus velezensis*  
Phosphorus Solubilization

PHYTASE ACTION ON  
ORGANIC PHOSPHORUS



+

>

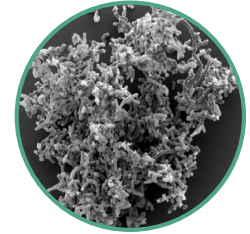
ORGANIC ACIDS ACTION ON  
MINERAL PHOSPHORUS



=

>

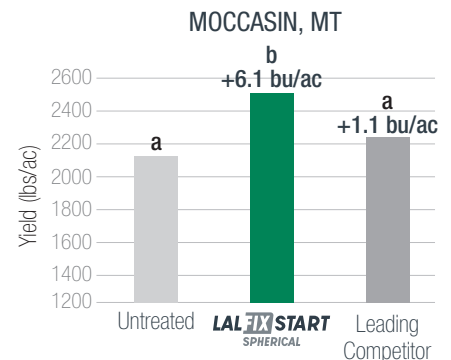
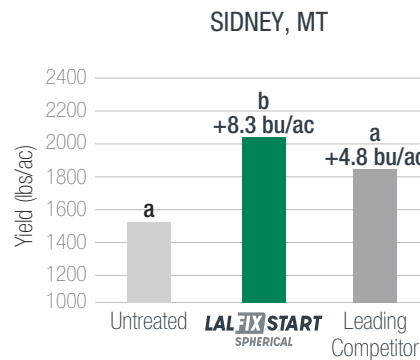
INCREASED  
PHOSPHORUS AVAILABLE  
IN THE RHIZOSPHERE



### TRIAL RESULTS

#### LALFIX® START SPHERICAL GRANULE

- Conducted through Montana State University
- Conducted by Dr. Chengci Chen (Sidney) and Dr. Jed Eberly (Moccasin)
- Bushel advantage over untreated listed above bars



4x Replications. Treatments with the same letters are not significantly different at  $p < 0.1$ . soil pH = 7.3 (Sidney), 7.6 (Moccasin)

### APPLICATION TIPS

- Follow equipment manufacturer's calibration methods.
- Calibrate in field at time of product use.
- Environmental conditions may affect calibration set points and overall granular flowability. Check calibration regularly.
- Ensure hopper tank, metering system and delivery hoses are clean from moisture, fertilizer, and pesticide residue before calibration.
- Granules should be applied directly into the seed trench furrow with the seed.
- Application rates greater than recommended are not detrimental and increased application rates may be beneficial.

Reference chart below for specific row width and suggested application rates:

ROW WIDTH		RECOMMENDED RATE			AREA TREATED - ACRES	
in	cm	lbs/ac	kg/ac	kg/ha	BAG	TOTE
6	15	4.4	2	5	6.1	98
7	18	3.8	1.7	4.3	7.1	113.5
8	20	3.3	1.5	3.7	8.2	131
9	23	3.0	1.4	3.3	9.0	144
10	25	2.7	1.2	3.0	10.0	160
12	30	2.2	1.0	2.5	12.3	196.5

### COMPATIBILITY

LALFIX® START SPHERICAL Pea & Lentil is compatible with seed-applied treatments and other in-furrow applications. If you have a compatibility question, contact your Lallemand Plant Care representative for more information.

#### About Lallemand Plant Care

Since the beginning of the 20th Century, LALLEMAND has been an expert in yeast and bacteria manufacturing. The family-owned company is now a global leader in the development, production, and marketing of microorganisms for various agri-food industries. Using sound science and know-how, LALLEMAND PLANT CARE (LPC) works closely with clients to deliver the right technology, in the right formulation, for the right application. LPC is committed to solving grower challenges, significantly improving yield and crop vitality.

Microbial By Nature

[www.lallemandplantcare.com](http://www.lallemandplantcare.com)



LALLEMAND PLANT CARE