



### CHARACTERISTICS

**Active Ingredient**

1 x 10<sup>8</sup> *Bradyrhizobium elkanii* CFU/g  
5 x 10<sup>7</sup> *Bacillus velezensis* CFU/g

**Bulk Density**

31.5 lbs per cu. ft., 0.505 kg/L

**Package Size**

12.2 kg (27 lbs) per bag  
391.9 kg (864 lbs) per tote

**In-Furrow Application Rate**

10-inch row spacing, apply  
2.7 pounds per acre with  
one bag treating 10 acres

Always read and follow label instructions

## MULTI-ACTION PREMIUM SOYBEAN GRANULAR INOCULANT

With its high porosity structure maintaining the growth environment to protect and preserve the two unique strains of rhizobia, **LALFIX® START SPHERICAL Soybean** offers unmatched **performance, durability** and **ease-of-use**.

Our proprietary, dual-action phosphorus solubilizer, *Bacillus velezensis*, contained within each granule, quickly colonizes the root system allowing for newly available phosphorus to be efficiently taken up by the plant. In fact, the biological contained within **LALFIX® START SPHERICAL Soybean** is the benchmark for increased phosphorus availability at all soil pH levels.

Once applied to the soil, the highly efficient bacteria will colonize the root promoting early nodulation and N fixation for better crop establishment and enhanced yields.

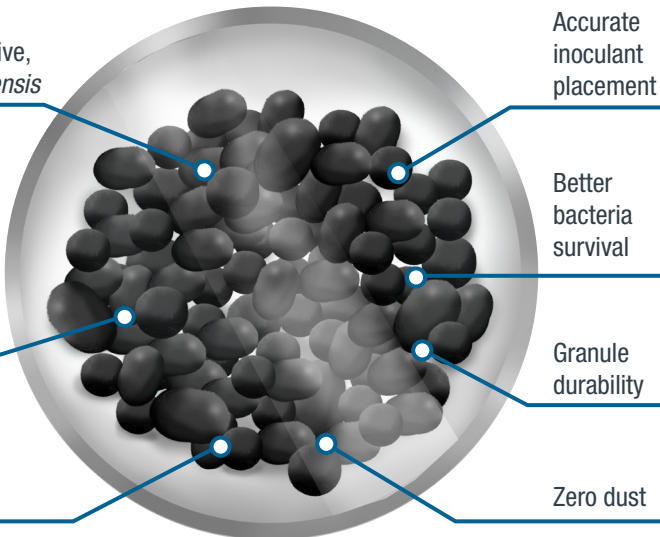


### ADVANTAGES

**New for 2023**  
Addition of active,  
*Bacillus velezensis*

Better  
flowability  
through  
application  
equipment

Consistent  
granule size



Accurate  
inoculant  
placement

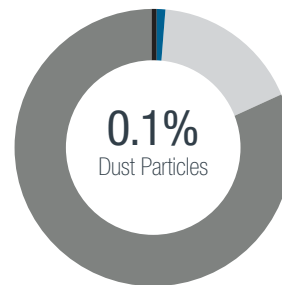
Better  
bacteria  
survival

Granule  
durability

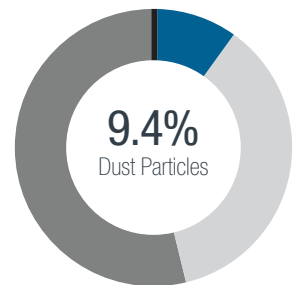
Zero dust

### SPHERICAL GRANULE: CONSISTENT SIZE & LOW DUST

AGVISE LABORATORIES



LALFIX® Granular Technology



Traditional Peat Granules

● <0.5 mm    ● 0.5-1.0 mm    ● 1.0-2.0 mm    ● >2.0 mm

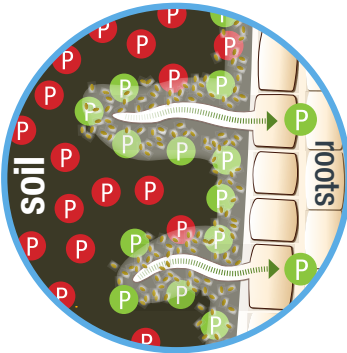


### MODES OF ACTION

*Bacillus velezensis*

Phosphorus Solubilization

PHYTASE ACTION ON ORGANIC PHOSPHORUS



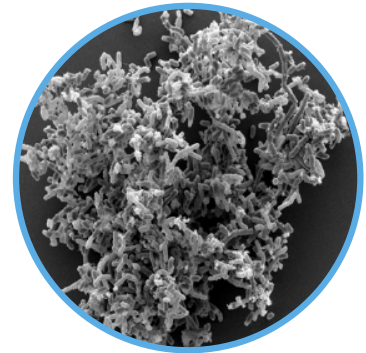
+

ORGANIC ACIDS ACTION ON MINERAL PHOSPHORUS



=

INCREASED PHOSPHORUS AVAILABLE IN THE RHIZOSPHERE



### APPLICATION TIPS

- Follow equipment manufacturer's calibration methods.
- Calibrate in field at time of product use.
- Environmental conditions may affect calibration set points and overall granular flowability. Check calibration regularly.
- Ensure hopper tank, metering system and delivery hoses are clean from moisture, fertilizer, and pesticide residue before calibration.
- Granules should be applied directly into the seed trench furrow with the seed.
- Application rates greater than recommended are not detrimental and increased application rates may be beneficial.

Reference chart below for specific row width and suggested application rates:

ROW WIDTH		RECOMMENDED RATE			AREA TREATED - ACRES	
in	cm	lbs/ac	kg/ac	kg/ha	BAG	TOTE
6	15	4.4	2	5	6.1	196
7	18	3.8	1.7	4.3	7.1	227
8	20	3.3	1.5	3.7	8.2	262
9	23	3.0	1.4	3.3	9.0	288
10	25	2.7	1.2	3.0	10.0	320
12	30	2.2	1.0	2.5	12.3	393
15	38	1.8	0.8	2.0	15.0	480
22	56	1.2	0.5	1.4	22.5	720
30	76	0.9	0.4	1.0	30.0	960

### COMPATIBILITY

LALFIX® START SPHERICAL Soybean is compatible with seed-applied treatments and other in-furrow applications. If you have a compatibility question, contact your Lallemand Plant Care representative for more information.

#### About Lallemand Plant Care

Since the beginning of the 20th Century, LALLEMAND has been an expert in yeast and bacteria manufacturing. The family-owned company is now a global leader in the development, production, and marketing of microorganisms for various agri-food industries. Using sound science and know-how, LALLEMAND PLANT CARE (LPC) works closely with clients to deliver the right technology, in the right formulation, for the right application. LPC is committed to solving grower challenges, significantly improving yield and crop vitality.

Microbial By Nature

[www.lallemandplantcare.com](http://www.lallemandplantcare.com)



LALLEMAND PLANT CARE