

Fresh Produce
 Leafy salads,
 Fruiting vegetables,
 Soft fruit

CILUS® PLUS

Promote the development and quality of plants

Cilus® Plus is a microbial preparation containing a very high concentration of *Bacillus amyloliquefaciens* strain IT45 isolated through Lallemand Research.

Benefits

- **Accelerates root development:** starter effect.
- **Activates the speedy growth of shoots and flowers.**
- **Improves the visual quality of plants:** roots, vegetative plant parts and fruit.

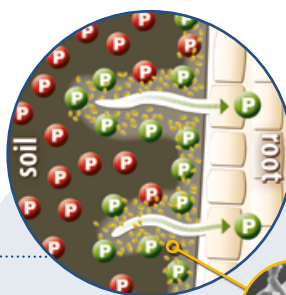
Modes of action

The *Bacillus* IT45 bacteria contained in Cilus® Plus multiply and quickly colonise the rhizosphere (zone near the roots) by feeding on root exudates.

In return, this bacterial population brings several benefits to the plant:

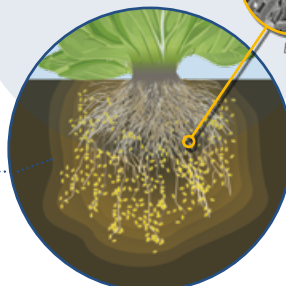
- ✓ **Solubilises phosphorus:**
+28 % of Phosphorus available in the rhizosphere*

P Phosphorus unavailable
P Phosphorus available



- ✓ **Stimulates growth of efficient roots (root hairs):**
+20 % of root biomass *

Increase in the area for interception of nutrients



- ✓ **Probiotic effect:**
 Rhizosphere occupation by beneficial microbes.

*Results obtained from a series of tests over 10 years

LALLEMAND

LALLEMAND PLANT CARE



THE
 MICROORGANISM
 SPECIALIST



Bacillus amyloliquefaciens strain IT45

Active substance:

2.10¹⁰ CFU/g of
Bacillus amyloliquefaciens strain IT45

Formulation:

Wettable powder

Packaging:

200 g bag

Usable in organic farming



Applications

Crop	Dose	Stages	Method of application
Fresh Produce Crops	200 g/ha	Short cycle (2-3 months) : from transplanting then every 2-3 weeks Long cycle (5-6 months) : from transplanting then every month	Soil spraying/drenching In the irrigation (drip or microjets) Fertigating plants
	0.04 g/plant		
	200 g per 100 L of batch solution		

Compatibility: for any mixing with chemical products, ask your distributor.

Conditions at application: – optimal temperature between 10 °C and 30 °C.
 – apply preferably in humid conditions.
 – do not apply on dry and in high temperature periods.

Results

■ Increased root efficiency and recovery of fertiliser units.

Trial on tomatoes, APREL 2012.
 Bouches du Rhône (13)

Crop	Tunnel grown tomatoes
Planting	Week 14
Application	Drip irrigation, once per month from transplanting
Fertilisation	Organic and mineral fertilisers

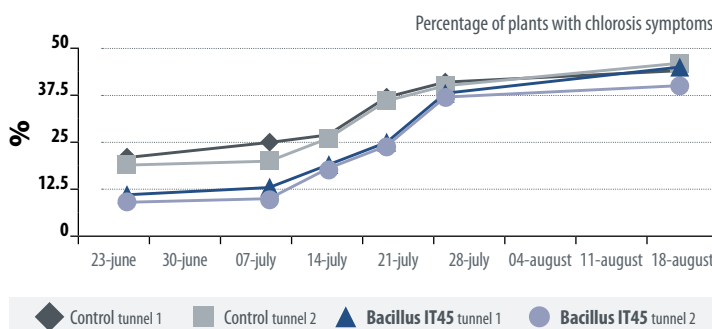
	Typical Fertilisation	Controlled Fertilization (PILazo [®] method)	
Yield (kg/m²)	8.7 a	7.7 b	9.0 a
Yield category 1 (kg/m²)	6.8 a	5.9 b	7.1 a
	N: 332 - P: 192 - K: 810	N: 208 - P: 118 - K: 424	N: 208 - P: 118 - K: 424 + Bacillus IT45

Maintain **commercial yield** and **fruit size**
 (in conditions of reduced mineral fertilisation)

■ Improvement of the visual quality of the plants.

Trial on aubergines, APREL 2016.
 Bouches du Rhône (13)

Crop	Aubergine in cold tunnels
Variety	Black Pearl grafted on Beaufort
Planting	Week 15
Application	Drip irrigation, once per month from transplanting



Decrease in **mortality** and **chlorosis symptoms**
 related to root problems

LALLEMAND PLANT CARE

DANSTAR FERMENT A.G.
 Postrasse 30, Zug CH-6300
 Switzerland