

LALFIX START

SPHERICAL SOYBEAN



SOYBEAN



SPHERICAL
GRANULAR



INOCULANT



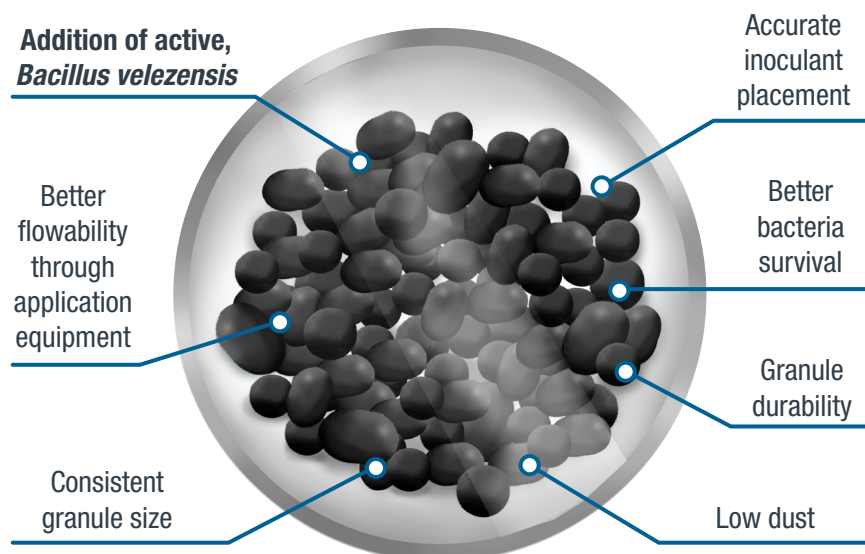
MULTI-ACTION PREMIUM SOYBEAN GRANULAR INOCULANT

With its high porosity structure maintaining the growth environment to protect and preserve the two unique strains of rhizobia, **LALFIX® START SPHERICAL Soybean** offers unmatched **performance, durability** and **ease-of-use**.

Our dual-action phosphorus solubilizer, *Bacillus velezensis*, contained within each granule, quickly colonizes the root system allowing for newly available phosphorus to be efficiently taken up by the plant. In fact, the biological contained within **LALFIX START SPHERICAL Soybean** is the benchmark for increased phosphorus availability at all soil pH levels.

Once applied to the soil, the highly efficient bacteria will colonize the root promoting early nodulation and N fixation for better crop establishment and enhanced yields.

ADVANTAGES



CHARACTERISTICS

Active Ingredient

- 1×10^8 *Bradyrhizobium elkanii* CFU/g
- 5×10^7 *Bacillus velezensis* CFU/g

Bulk Density

31.5 lbs per cu. ft., 0.505 kg/L

Package Size

- 12.2 kg (27 lbs) per bag
- 392 kg (864 lbs) per tote

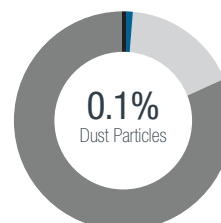
Always read and follow label instructions.

IN-FURROW APPLICATION RATE

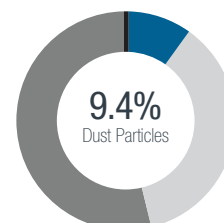
10" row spacing = 2.7 lbs/ac (1 bag treats 10 acres).
See table for recommended rates by row spacing.

SPHERICAL GRANULE: CONSISTENT SIZE & LOW DUST

AGVISE LABORATORIES



LALFIX® Granular
Technology



Traditional
Peat Granules

● <0.5 mm ● 0.5-1.0 mm ● 1.0-2.0 mm ● >2.0 mm

Microbial by nature

LALLEMANDPLANTCARE.COM

LALLEMAND

MODES OF ACTION

Bacillus velezensis

Phosphorus Solubilization

ORGANIC ACIDS ACTION ON
MINERAL PHOSPHORUS

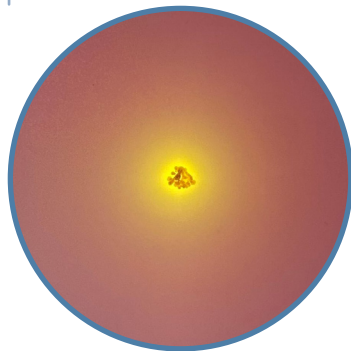
+

PHYTASE ACTION ON
ORGANIC PHOSPHORUS

=

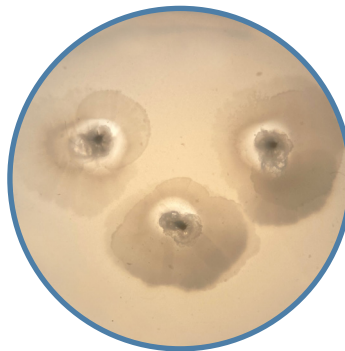
INCREASED PHOSPHORUS
AVAILABLE IN THE
RHIZOSPHERE

Bacillus velezensis



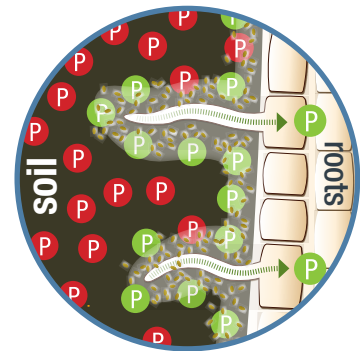
Below pH 5.2 ↔ Above pH 6.8

>



Halo indicates bacterial
phytase activity

>



Solubilizes phosphorus:
Up to 28% increase

APPLICATION TIPS

- Follow equipment manufacturer's calibration methods.
- Calibrate in field at time of product use.
- Environmental conditions may affect calibration set points and overall granular flowability. Check calibration regularly.
- Ensure hopper tank, metering system and delivery hoses are clean from moisture, fertilizer, and pesticide residue before calibration.
- Granules should be applied directly into the seed trench furrow with the seed.
- Application rates greater than recommended are not detrimental and increased application rates may be beneficial.

Reference chart below for specific row width and suggested application rates:

ROW WIDTH		RECOMMENDED RATE			AREA TREATED - ACRES	
in	cm	lbs/ac	kg/ac	kg/ha	BAG	TOTE
6	15	4.4	2	5	6.1	196
7	18	3.8	1.7	4.3	7.1	227
8	20	3.3	1.5	3.7	8.2	262
9	23	3.0	1.4	3.3	9.0	288
10	25	2.7	1.2	3.0	10.0	320
12	30	2.2	1.0	2.5	12.3	393
15	38	1.8	0.8	2.0	15.0	480
22	56	1.2	0.5	1.4	22.5	720
30	76	0.9	0.4	1.0	30.0	960

COMPATIBILITY

LALFIX START SPHERICAL Soybean is compatible with seed-applied treatments and other in-furrow applications. If you have a compatibility question, contact your Lallemand Plant Care representative for more information.

About Lallemand Plant Care

For over 100 years, Lallemand has been an expert in yeast and bacteria manufacturing. It is now a global leader in the development, production, and marketing of microorganisms for various industries. Using sound science and know-how, Lallemand Plant Care provides effective microbial-based solutions that deliver agronomic, economic, and sustainable value to growers.

Microbial by nature

LALLEMANDPLANTCARE.COM

LALLEMAND